

Suntronic's 82" Outdoor LCD

It's BIG and NEW

Model: GS8200L



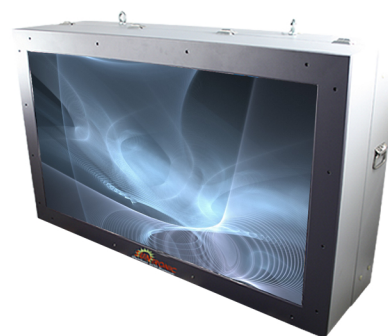
Product Highlights:

- ▶ **Brightness: 1500 nits**
- ▶ **All Weather Proof IP65 Enclosures**
- ▶ **Operating Temperature -40C To 50C***
- ▶ **Integrated heater and air conditioner**
- ▶ **Slim Bezel Thickness 30mm only**
- ▶ **High-Brightness LCD Panel**

Suntronic's 82" Outdoor LCD GS8200L All Weather NEMA4/IP65 Outdoor 1500nits High Brightness Wide Temp (-40F to 100F)

SunTronics GS Series product line, featuring innovative All-Weather Sunlight Readable LCD technology, provides the highest-quality Sunlight Readable image available in Outdoor Environment. These Rugged Industrial Grade Outdoor displays have the exemplary brightness and resolution you've come to expect from SunTronics. GS technology delivers stunning images for use in applications such as:

- Airport
- Retail/ Restaurants
- Gas Stations
- Restaurants
- Ski Resorts
- Golf Course
- Shopping Malls
- Outdoor Signs



Only SunTronic's GS monitors deliver the full HD resolution for outdoor stunning Digital Contents. SunTronics technology has the unprecedented slimmest front bezel for outdoor Video Wall. In addition, Front access features for easy maintenance allows user to gain front access to valuable components, such as air conditioner, heater and LCD controller board inside the sealed enclosures, eliminating the need to remove from the wall.

Features:

- High-Brightness LCD Panel
- All Weather Proof IP65 Enclosures
- Operating Temperature -40°C To 50°C
- Integrated heater and air conditioner
- Slim Bezel Thickness 18mm only
- Vandal Resistant Screen & housing
- Unique Front Access Design
- Remote Reboot/Temp.& Humidity Monitoring available (Optional)
- Wireless and VGA/DVI CAT5 signal extenders available (Optional)

Technical Specifications:

Active area size (W x H): 82"

Pixel pitch (mm): 0.9405(H) x 0.9405 (V)

Panel resolution (pixels): 1080 (H) x 1920 (V)

Luminance of white (Brightness): 1500 nits (Typ.) Max 2000nits

Response time (gtg): 8 ms (Typ)

Viewing angle: 89/89/89/89

Video inputs: VGA, S-Video

Front glass type: AR Safety 6mm glass (Landscape mode)

IP Class: IP65/NEMA4

Operating temperature range: -40 to + 100F (Direct Sunlight) /110F (Under Shaded Area)

Input voltage: 110V

Portrait version: Please contact SuntronicLCD for details