



# K Series

**Open frame, 42" LCD monitor, 1920 x 1080, 1500 nits- VGA + DVI, LED Backlight, Contrast Ratio 4000:1, power input 100/240V, Max Power Consumption 260 Watts, AC power cable x1DVI cable x1VGA cable x1**

**Model: KOP-H4200HB**

K Series is a High Brightness Sunlight Readable Open Frame LCD screen (Optional for SAW or IR Water Proof Touch) where can integrate into Any Outdoor Free Standing Kiosk Market. KOP Series provides High brightness LCD panel with LEC and RS232 control as options. It perfectly fit for US/Canada Kiosk manufacturers for outdoor self-service application including vended Internet access, order entry, human resources, ticketing, bill payment, digital content download, digital signage, way-finding, in-store cataloguing and many others.

### Features:

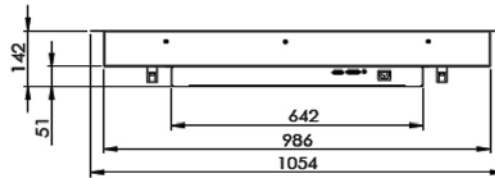
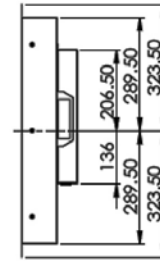
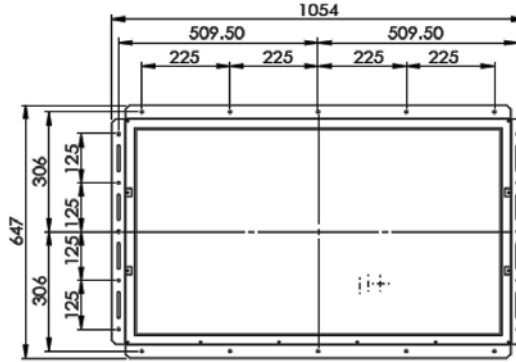
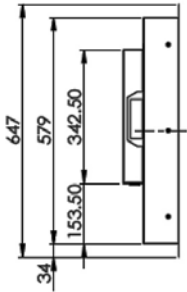
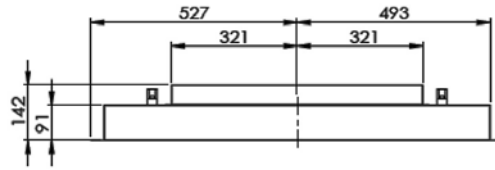
- 1500 nits sunlight readable display. With LED backlight applied
- WUXGA (1920 x 1080 pixels) Full HD resolution
- RoHS Compliance
- Long operation life
- 5 keys OSD controls
- VGA and DVI Video Input and auto detection video system.
- Quick and easy integrations for Client solutions

### Specification:

Item	Specification	Unit	Note	
LCD panel	Active screen size	930.24(H) x 523.26(V) (42.02 inches diagonal)	mm	
	Resolution	1920 (H) x 1080(V)	pixels	
	Pixels pitch(Sub Pixel)	0.4845(H) x 0.4845(V)	mm	
	Pixel arrangement	RGB vertical stripe		
	Display mode	MVA mode, normally black		
	Display colors	16.7 M	colors	
	Brightness	1500	nits	
	Contrast Ratio	4000 : 1		
	Response time	6.5 ms (G to G)		
	Aspect Ratio	16 : 9		
Graphic	Input Connector	D-Sub 15 pins, DVI		
Power	Power Input	100~240	VAC	
Power Consumptions	Operation Mode	260 (max)	W	
	Saving Mode	3.5 (max)	W	
Physical	Dimension	Reference to drawing	mm	
	Weight	15(max)	KG	
Environment	Operating Temperature	-0 ~ 50	°C	1
	Storage Temperature	-20 ~ 60	°C	
Reliability	Backlight MTBF	60,000	hours	
	Warranty	18	month	
	ON / OFF cycle	36,000	cycle	
DCC	Plug & Play	DDC 2B Compliance		
Function	OSD key	5 keys(Power ,Enter , ▲ , ▼ ,Menu)		
	Wall mount	VESA standard 200x200, 200x600	mm	

Note 1: The unit should not be exposed to corrosive chemicals.

Mechanical Drawing:



VESA MOUNT  
8-M6 SCREW  
DP=8mm Max

